

2017 Coaches

Head Coach:
Doug Pederson (2nd yr)
Offensive Coordinator:
Frank Reich (2nd yr)
Defensive Coordinator:
Jim Schwartz (2nd yr)

Philadelphia Eagles



2017 Forecast

Wins **Div Rank**
8 **#3**

Past Records

2016: 7-9
2015: 7-9
2014: 10-6

EASY HARD



Key Players Lost

TXN	Player (POS)	
Cut	Bailey, Rasheed WR	
	Barvin, Connor LB	
	Daniel, Chase QB	
	Daniels, Steven LB	
	Evans, Jerod QB	
	LeRibeus, Josh G	
	McKelvin, Leodis CB	
	Oliver, Marcus LB	
	Shittu, Aziz DT	
	Walker, Charles DT	
	Williams, Dom WR	
	Wujciak, Connor DT	
	Declared Free Agent	Barner, Kenjon RB
		Braman, Bryan DE
		Carroll, Nolan CB
Logan, Bennie DT		
Retired	Tulloch, Stephen LB	
	Wisniewski, Stefan C	

Average Line	# Games Favored	# Games Underdog
+0.6	7	8

2017 Philadelphia Eagles Overview

Last spring, the Eagles traded up to draft QB Carson Wentz, who was projected to learn behind QB Sam Bradford. Then Teddy Bridgewater went down and Wentz was immediately thrust into a starting role. And the Eagles thrived to start the season, winning 3 straight games and scoring no less than 29 points in any game, winning by solid margins in each game. And Wentz did well in each game, posting over a 100 passer rating twice (averaged a 104 rating), throwing a total of 5 TDs and 0 ints while taking no more than 2 sacks in any game, and 4 total sacks over his first 3 games.

Then the Eagles entered their bye week (week 4) and the season wasn't the same. Key offensive lineman Lane Johnson saw his 10-game suspension, which was on appeal, upheld by the league. Week 4 was his last game and he would not return until week 15. Ironically, with Johnson in the lineup, the Eagles were 5-1 last year. Without him anchoring the line at right tackle, the team was 2-8. The Eagles could not stay healthy at the right tackle position and it was a virtual revolving door of players trying to stay healthy enough to fill that role.

The other element making it so difficult to overcome injuries along the line is to witness the lower right graphic to see the Eagles positional spending. In 2016 the Eagles spent the 2nd most of any team on the offensive line. The team was inexpensively built last year, spending the most on the offensive line and running back. But when you're trying to protect a young quarterback, it's nice to have a system built to keep him upright and comfortable, and the Eagles thought they had that covered but injuries derailed it. Remarkably, however, the Eagles still ranked 10th in pass protection efficiency. But that was, in large reason, because of the number of passes they (intelligently) threw to RBs and TEs, which are typically more efficient and can be released quicker. Wentz targeted his TEs and RBs each over the NFL average, and while the RB success rate was subpar apart from Sproles, the TE success rate was the 5th best in the NFL.

Speaking of the TE, the Eagles loved using 12 personnel (1 RB, 2 TE). They used it more than any other team in the NFL, and when they lined up in 12 personnel, they passed the ball almost as much as they did when in 11 personnel.

(cont'd - see PH12)

Key Free Agents/ Trades Added

Blount, LeGarrette RB
Daniels, Steven LB
Foies, Nick QB
Jeffery, Aishon WR
Jernigan, Timmy DT
Long, Chris DE
Robinson, Patrick CB
Smith, Torrey WR
Thomas, Dallas G
Warmack, Chance G

Drafted Players

Rd	Pk	Player (College)
1	14	DE - Derek Barnett (Tennessee)
2	43	CB - Sidney Jones (Washington)
3*	99	CB - Rasul Douglas (West Virginia)
4	118	WR - Mack Hollins (North Carolina)
	132	RB - Donnel Pumphrey (San Diego State)
5	166	WR - Shelton Gibson (West Virginia)
5*	184	S - Nathan Gerry (Nebraska)
6	214	DT - Elijah Qualls (Washington)

2017 Unit Spending



Positional Spending

	Rank	Total	2016 Rk
All OFF	2	\$99.27M	21
QB	26	\$8.30M	27
OL	2	\$45.35M	2
RB	6	\$11.22M	3
WR	9	\$23.55M	32
TE	10	\$10.85M	16
All DEF	20	\$75.80M	21
DL	8	\$39.21M	7
LB	22	\$15.02M	26
CB	30	\$7.53M	26
S	9	\$14.04M	12

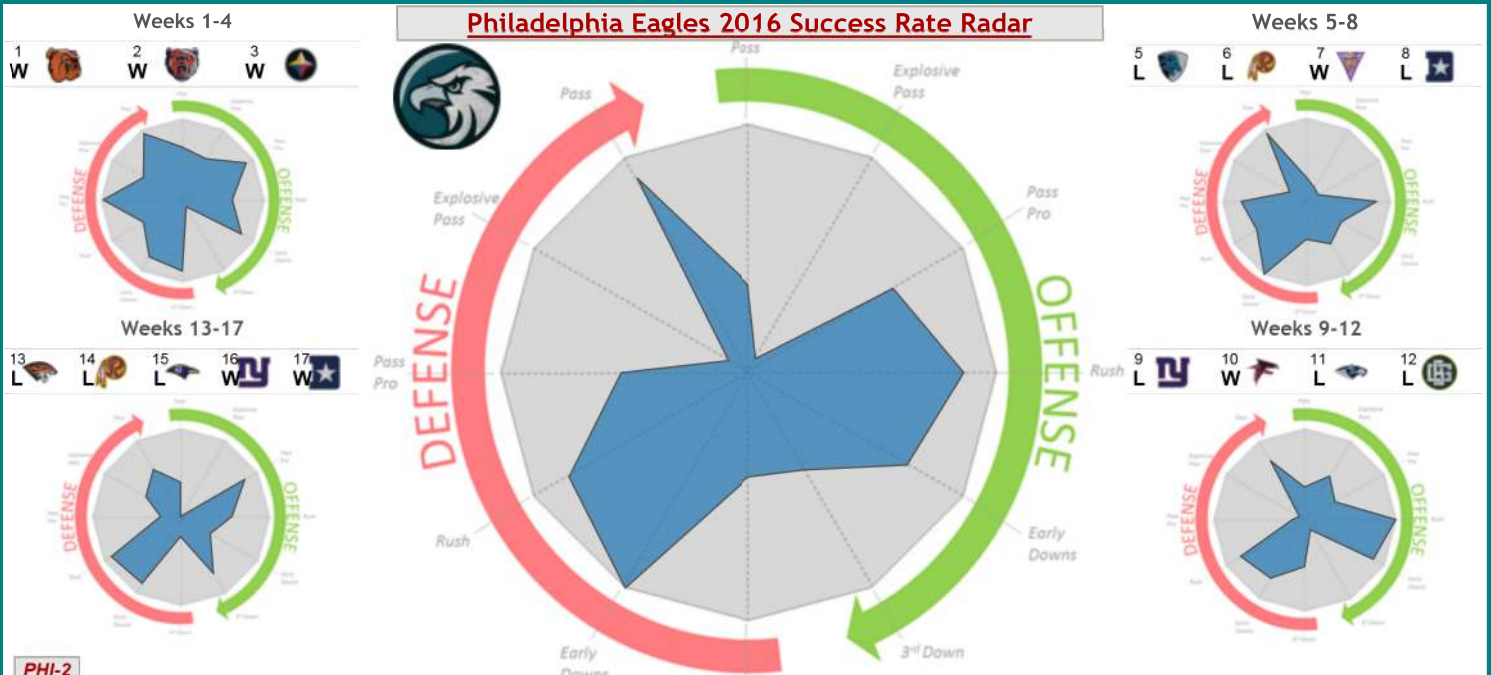
Regular Season Wins: Past & Current Proj

Proj 2017 Wins	8
2016 Wins	7
Proj 2016 Wins	7
2015 Wins	7
2014 Wins	10
2013 Wins	10

2017 Lineup & Cap Hits



2017 Cap Dollars



PHI-2

The problem in 12 personnel came when targeting their WRs instead of TEs. When targeting WRs in 12 personnel, the Eagles were successful on just 36% of their passes, with a 58 rating from Wentz (compare that to in 11 personnel, when the success rate was 48%). But when targeting the TEs in 12 personnel (as there are 2 on the field), the Eagles were successful on 64% of their plays (with a 98 rating from Wentz). So clearly the Eagles were great when targeting their TEs in 12 personnel, and they ran 12 personnel more often than any other team in the NFL. But they targeted WRs on 70% of their non-RB passes in 12 personnel, while targeting the TEs on only 30% of those attempts.

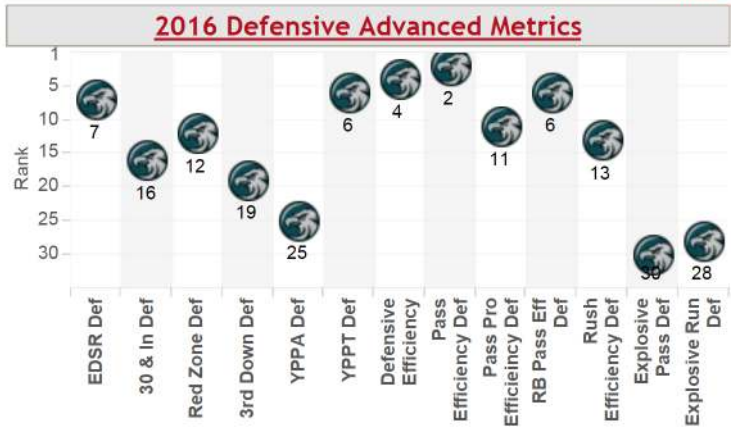
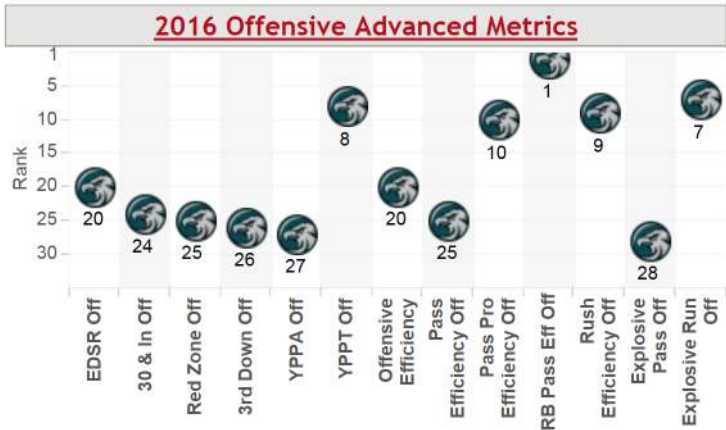
This positional usage was extremely odd because it was far and away the most in the NFL. While the average targeting of WRs came from 12 personnel on just 13% of plays, the Eagles were using 12 personnel on 31% of their WR targets. Most teams averaged about 45 targets to WRs when in 12 personnel. The Eagles targeted them 115 times. And the target quality was, as mentioned, 36% success rate and 58 passer rating. Hopefully Doug Peterson sees these numbers

and modifies his targets and play calls when in 12 personnel to focus more on the TE. Because that was the best time to use the TEs – in 11 personnel, the success rate for the Eagles as well as Wentz's passer rating were not nearly as strong as they were when in 12 personnel.

There are some other areas the Eagles could clean up their play calling to improve efficiency. I won't tackle them all here. One lesser area would be to run the ball more often on 2nd and short. It wasn't as egregious as other play calling inefficiencies, but they were 25% more successful at converting first downs when running than passing (larger than the NFL average) but they still ran it only as often as the NFL average. This is a smaller issue, but the larger issue is this:

It is very difficult for most sophomore quarterbacks in the NFL. Opponents have a full season of tape on them. They've seen their best and their worst. Defensive coordinators have a lot of ammunition to throw at the young signal callers.

(cont'd - see **PHI-3**)



2016 Weekly EDSR & Season Trending Performance

1	2	3	5	6	7	8	9	10	11	12	13	14	15	16	17
W	W	W	L	L	W	L	L	W	L	L	L	L	L	W	W
CLE	CHI	PIT	DET	WAS	MIN	DAL	NYG	ATL	SEA	GB	CIN	WAS	BAL	NYG	DAL
H	A	H	A	A	H	A	A	H	A	H	A	H	A	H	H
19	15	31	-1	-7	11	-6	-5	9	-11	-14	-18	-5	-1	5	14
29	29	34	23	20	21	23	23	24	15	13	14	22	26	24	27
10	14	3	24	27	10	29	28	15	26	27	32	27	27	19	13



WEEK RESULT
OPP
SITE
MARGIN
PTS
OPP PTS

EDSR by Wk
W=Green
L=Red

OFF/DEF
EDSR
Blue=OFF
(high=good)
Red=DEF
(low=good)

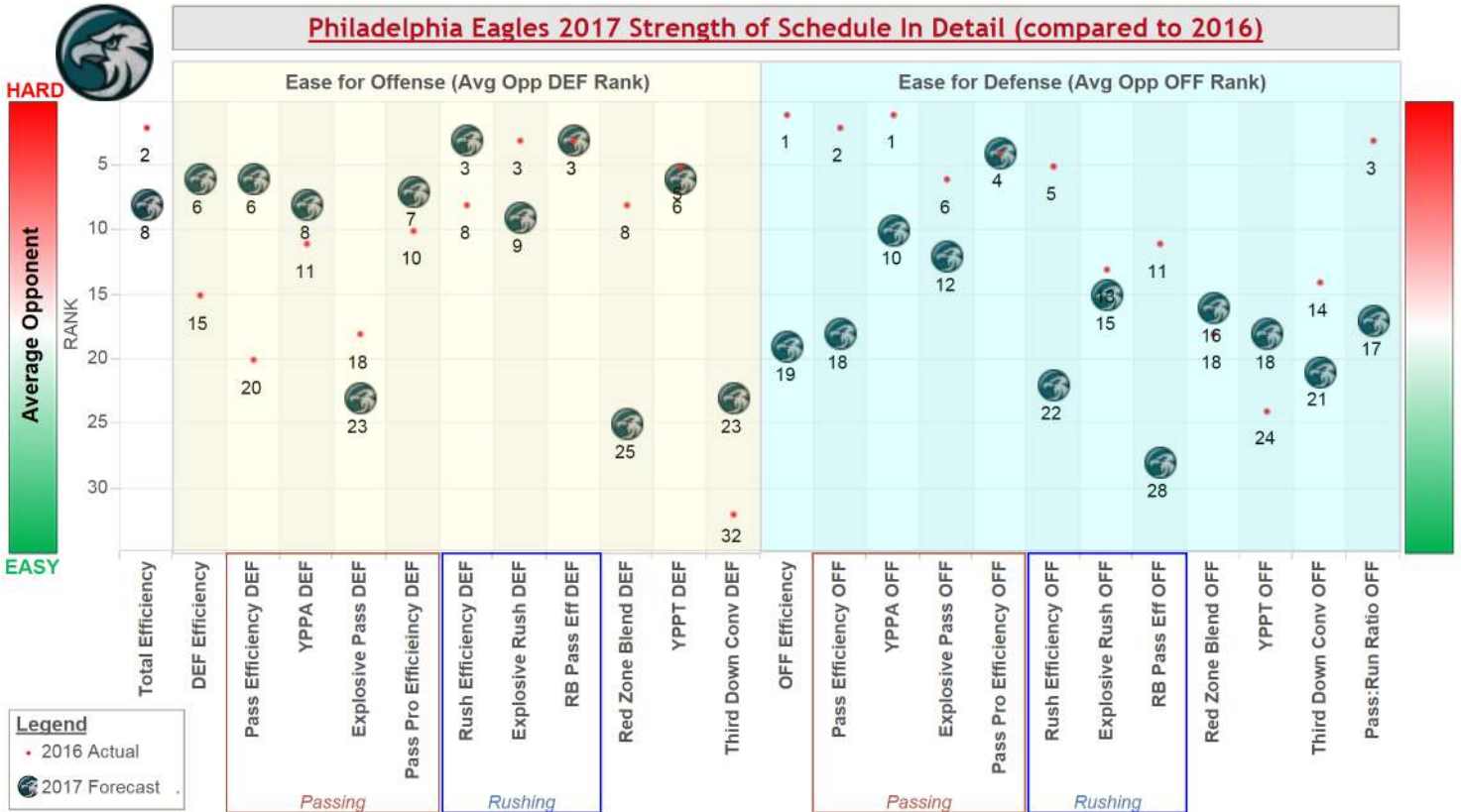
2016 Close Game Records

All 2016 Wins: 7
 FG Games (<=3 pts) W-L: 0-2
 FG Games Win %: 0% (#29)
 FG Games Wins (% of Total Wins): 0% (#30)
 1 Score Games (<=8 pts) W-L: 1-6
 1 Score Games Win %: 14% (#30)
 1 Score Games Wins (% of Total Wins): 14% (#32)

2016 Critical & Game-Deciding Stats

TO Margin	+6
TO Given	20
INT Given	14
FUM Given	6
TO Taken	26
INT Taken	16
FUM Taken	10
Sack Margin	+1
Sacks	34
Sacks Allow	33
Return TD Margin	+4
Ret TDs	5
Ret TDs Allow	1
Penalty Margin	-14
Penalties	113
Opponent Penalties	99

Philadelphia Eagles 2017 Strength of Schedule In Detail (compared to 2016)



2017 v 2016 Schedule Variances*

Pass OFF Rk	Pass OFF Blend Rk	Rush OFF Rk	Rush OFF Blend Rk	Pass DEF Rk	Pass DEF Blend Rk	Rush DEF Rk	Rush DEF Blend Rk
2	5	8	20	31	26	30	32

* 1=Hardest Jump in 2017 schedule from 2016 (aka a much harder schedule in 2017), 32=Easiest Jump in 2017 schedule from 2016 (aka a much easier schedule in 2017);
Pass Blend metric blends 4 metrics: Pass Efficiency, YPPA, Explosive Pass & Pass Rush; **Rush Blend** metric blends 3 metrics: Rush Efficiency, Explosive Rush & RB Targets

Team Records & Trends

	2016	2015	2014
Average line	0.7	-1.0	-2.1
Average O/U line	44.2	48.6	50.5
Straight Up Record	7-9	7-9	10-6
Against the Spread Record	8-8	7-9	9-6
Over/Under Record	8-7	8-8	11-5
ATS as Favorite	3-3	4-6	6-3
ATS as Underdog	4-5	3-3	3-3
Straight Up Home	6-2	3-5	6-2
ATS Home	6-2	3-5	5-3
Over/Under Home	2-6	4-4	6-2
ATS as Home Favorite	3-1	3-4	5-2
ATS as a Home Dog	2-1	0-1	0-1
Straight Up Away	1-7	4-4	4-4
ATS Away	2-6	4-4	4-3
Over/Under Away	6-1	4-4	5-3
ATS Away Favorite	0-2	1-2	1-1
ATS Away Dog	2-4	3-2	3-2
Six Point Teaser Record	13-3	8-7	12-4
Seven Point Teaser Record	13-3	10-6	12-4
Ten Point Teaser Record	13-2	11-5	13-3

PHI-3

It is of paramount importance for offensive coordinators / play callers to exhaust every possible angle to help the young quarterback's second season go as smooth as possible. Whether it's play calls, types of passes, protection schemes, formation usage and/or positional usage within personnel packages, there is no excuse for a team to not invest a significant amount of research over the offseason to find elements to accentuate in year 2, or weaknesses that need work for further development.

One thing the Eagles did was go out and grab WRs Alshon Jeffery and Torrey Smith in free agency to help Carson Wentz and the pass game. They now have the 4th most expensive offense, and every single position group (offensive line, running back, wide receiver, tight end) save for Wentz's own is inside the top 10 for NFL 2017 salary cap hit. Last season the Eagles faced the 20th rated pass defenses in Wentz's rookie season. This year they will face the 6th most difficult pass defenses. That is the 2nd largest jump in difficult for any team from 2016 to 2017. The defenses he will face are better defending explosive pass and have better pass rushes as well.

(cont'd - see PHI-4)

2017 Rest Analysis

Avg Rest	6.47
Avg Rk	3
Team More Rest	4
Opp More Rest	3
Net Rest Edge	1
3 Days Rest	1
4 Days Rest	0
5 Days Rest	2
6 Days Rest	9
7 Days Rest	1
8 Days Rest	0
9 Days Rest	0
10 Days Rest	1
11 Days Rest	0
12 Days Rest	0
13 Days Rest	1
14 Days Rest	0

Health by Unit*

2016 Rk	4
(2015 Rk)	6
Off Rk	3
Def Rk	5
QB Rk	1
RB Rk	22
WR Rk	8
TE Rk	11
OLine Rk	9
DLine Rk	6
LB Rk	6
DB Rk	17

*Based on the great work of Scott Kacsmar from Football Outsiders

2017 Weekly Betting Lines (wks 1-16)

1	2	3	4	5	6	7	8	9	11	12	13	14	15	16
WSH	KC	NYG	LAC	ARI	CAR	WSH	SF	DEN	DAL	CHI	SEA	LAR	NYG	OAK
+3.0	+4.0	-1.0	+1.5	-2.0	+4.0	-2.5	-7.5	-1.0	+7.0	-6.0	+7.0	-1.5	+3.5	+1.0
Avg = 0.6														
+3.0	+4.0	-1.0	+1.5	-2.0	+4.0	-2.5	-7.5	-1.0	+7.0	-6.0	+7.0	-1.5	+3.5	+1.0

Home Lines (wks 1-16)

3	5	7	8	9	12	16
NYG	ARI	WSH	SF	DEN	CHI	
-1.0	-2.0	-2.5	-7.5	-1.0	-6.0	+1.0
Avg = -2.7						

Road Lines (wks 1-16)

1	2	4	6	11	13	14	15
WSH	KC	LAC	CAR	DAL	SEA	LAR	NYG
+3.0	+4.0	+1.5	+4.0	+7.0	+7.0	-1.5	+3.5
Avg = 3.6							

Philadelphia Eagles 2016 Play Analysis



2016 Play Tendencies

All Pass %	58%
All Pass Rk	18
All Rush %	42%
All Rush Rk	15
1 Score Pass %	63%
1 Score Pass Rk	3
2015 1 Score Pass %	59%
2015 1 Score Pass Rk	15
Pass Increase %	4%
Pass Increase Rk	4
1 Score Rush %	37%
1 Score Rush Rk	30
Up Pass %	57%
Up Pass Rk	18
Up Rush %	43%
Up Rush Rk	15
Down Pass %	59%
Down Pass Rk	24
Down Rush %	41%
Down Rush Rk	9

2016 Down & Distance Tendencies

Down	Distance	Total Plays	Pass Rate	Run Rate	Play Success %
1	Short (1-3)	7	29%	71%	86%
	Med (4-7)	10	20%	80%	70%
	Long (8-10)	318	50%	50%	53%
2	Short (1-3)	42	33%	67%	74%
	Med (4-7)	71	49%	51%	56%
	Long (8-10)	95	68%	32%	35%
3	Short (1-3)	37	49%	51%	65%
	Med (4-7)	42	88%	12%	50%
	Long (8-10)	44	91%	9%	32%
4	Short (1-3)	9	56%	44%	44%
	Med (4-7)	2	100%	0%	100%
	Long (8-10)	1	100%	0%	0%

Shotgun %:

Under Center	Shotgun
34%	66%

37% AVG 63%

Run Rate:

Under Center	Shotgun
70%	23%

68% AVG 23%

Pass Rate:

Under Center	Shotgun
30%	77%

32% AVG 77%

Short Yardage Intelligence:

2nd and Short Run

Run Freq	Run % Rk	NFL Run Freq Avg	Run 1D Rate	Run NFL 1D Avg
65%	16	65%	79%	71%

2nd and Short Pass

Pass Freq	Pass % Rk	NFL Pass Freq Avg	Pass 1D Rate	Pass NFL 1D Avg
35%	15	35%	54%	52%

Most Frequent Play

Down	Distance	Play Type	Player	Total Plays	Play Success %
1	Short (1-3)	RUSH	Ryan Mathews	2	100%
	Med (4-7)	RUSH	Ryan Mathews	5	80%
	Long (8-10)	RUSH	Ryan Mathews	65	55%
2	Short (1-3)	RUSH	Ryan Mathews	9	78%
	Med (4-7)	RUSH	Ryan Mathews	15	40%
	Long (8-10)	PASS	Jordan Matthews	17	35%
3	Short (1-3)	PASS	Zach Ertz	7	29%
		RUSH	Zach Ertz	5	60%
		RUSH	Ryan Mathews	5	60%
3	Med (4-7)	PASS	Jordan Matthews	9	67%
		RUSH	Darrian Spores	5	80%
		RUSH	Darrian Spores	5	80%
3	Long (8-10)	PASS	Dorial Green-Beckham	8	25%
		PASS	Nelson Agholor	6	0%

Most Successful Play*

Down	Distance	Play Type	Player	Total Plays	Play Success %
1	Med (4-7)	RUSH	Ryan Mathews	5	80%
	Long (8-10)	PASS	Brent Celek	6	83%
2	Short (1-3)	RUSH	Darrian Spores	6	83%
		PASS	Zach Ertz	10	80%
		PASS	Nelson Agholor	5	80%
2	Long (8-10)	PASS	Brent Celek	6	67%
		RUSH	Wendell Smallwood	6	67%
		PASS	Zach Ertz	7	29%
3	Short (1-3)	RUSH	Darrian Spores	5	80%
		PASS	Jordan Matthews	9	67%
		PASS	Dorial Green-Beckham	6	67%
3	Long (8-10)	PASS	Trey Burton	5	80%
		PASS	Nelson Agholor	6	0%

*Minimum 5 plays to qualify

2016 Snap Rates

Week	Opp	Score	Nelson Agholor	Zach Ertz	Jordan Matthews	Dorial Green-Beckham	Darrian Spores	Brent Celek	Trey Burton
1	CLE	W 29-10	67 (87%)	59 (77%)	74 (96%)	25 (32%)	38 (49%)	38 (49%)	
2	CHI	W 29-14	56 (78%)		71 (99%)	33 (46%)	38 (53%)	53 (74%)	31 (43%)
3	PIT	W 34-3	52 (80%)		55 (85%)	29 (45%)	24 (37%)	45 (69%)	33 (51%)
5	DET	L 24-23	48 (79%)	52 (85%)	57 (93%)	32 (52%)	34 (56%)	23 (38%)	11 (18%)
6	WAS	L 27-20	44 (85%)	46 (88%)	48 (92%)	42 (81%)	23 (44%)	13 (25%)	6 (12%)
7	MIN	W 20-10	40 (69%)	48 (83%)	45 (78%)	28 (48%)	26 (45%)	28 (48%)	16 (28%)
8	DAL	L 29-23	69 (91%)	61 (80%)	68 (89%)	49 (64%)	61 (80%)	23 (30%)	12 (16%)
9	NYG	L 28-23	69 (92%)	62 (83%)	65 (87%)	49 (65%)	60 (80%)	21 (28%)	17 (23%)
10	ATL	W 24-15	72 (91%)	59 (75%)	75 (95%)	44 (56%)	31 (39%)	29 (37%)	9 (11%)
11	SEA	L 26-15	70 (88%)	70 (88%)	73 (91%)	64 (80%)	10 (13%)	19 (24%)	7 (9%)
12	GB	L 27-13		55 (93%)	24 (41%)	48 (81%)	31 (53%)	23 (39%)	19 (32%)
13	CIN	L 32-14	80 (100%)	69 (86%)		50 (63%)	44 (55%)	19 (24%)	52 (65%)
14	WAS	L 27-22	68 (87%)	67 (86%)	76 (97%)		30 (38%)	30 (38%)	37 (47%)
15	BAL	L 27-26	85 (98%)	81 (93%)	76 (87%)	55 (63%)		26 (30%)	22 (25%)
16	NYG	W 24-19	56 (100%)	48 (86%)	39 (70%)	27 (48%)	27 (48%)	30 (54%)	16 (29%)
17	DAL	W 27-13	6 (8%)	70 (92%)		64 (84%)	29 (38%)	23 (30%)	42 (55%)
Grand Total			882 (82%)	847 (85%)	846 (86%)	639 (61%)	506 (49%)	443 (40%)	330 (31%)

Personnel Groupings

Personnel	Team %	NFL Avg	Succ. %
1-1 [3WR]	58%	60%	48%
1-2 [2WR]	31%	19%	44%
1-3 [1WR]	8%	3%	50%

Grouping Tendencies

Personnel	Pass Rate	Pass Succ. %	Run Succ. %
1-1 [3WR]	62%	45%	53%
1-2 [2WR]	59%	42%	47%
1-3 [1WR]	40%	52%	49%

Red Zone Targets (min 3)

Receiver	All	Inside 5	6-10	11-20
Zach Ertz	17	3	3	11
Nelson Agholor	14		3	11
Darrian Spores	13	1	1	11
Dorial Green-Beckham	12	2		10
Jordan Matthews	12	3	1	8
Trey Burton	8	2	1	5
Josh Huff	4	1		3
Brent Celek	3			3
Byron Marshall	3		1	2
Ryan Mathews	3	1	1	1

Red Zone Rushes (min 3)

Rusher	All	Inside 5	6-10	11-20
Ryan Mathews	37	17	8	12
Darrian Spores	18	3	5	10
Carson Wentz	8	3		5
Wendell Smallwood	7	2	1	4
Kenjon Barner	5	1	3	1
Byron Marshall	3		1	2
Terrell Watson	3	2	1	

Early Down Target Rate

RB	TE	WR
20%	22%	58%
19%	20%	61%
NFL AVG		

Overall Target Success %

RB	TE	WR
43%	59%	44%
#21	#5	#27



Philadelphia Eagles 2016 Passing Recap & 2017 Outlook

Carson Wentz is being given the pieces to have a successful 2017 campaign. All of his support positions are top 10 most expensive in the NFL this year: a healthy offensive line (suspension & injuries last year), with multiple new receivers and a new running back. Clearly one look at the visual passing cone to the right and you'll see Wentz needs a lot of work. Wentz needs to work on his deep passing offense and explosive passing offense. He threw a below average rate of 20+ air yard completions (deep passing) and the offense generated a below average rate of 20+ or 30+ yard pass play gains (explosive passing). His overall yards per attempt is low, but that's not because his YAC per completion was low – in fact it was the NFL average. But his air yardage per completion was well over 1 yard below the NFL average, and his air yards vs YAC were the inverse of the NFL average. Related is the fact Wentz must pass the ball beyond the sticks on 3rd down more often. On average, his completions were 2.25 yards short of the sticks, which resulted in just a 36% conversion rate on 3rd down when passing, and a 60 passer rating. His new WR weapons should increase the efficiency of those targets, but the Eagles still need to focus on more TE targets.

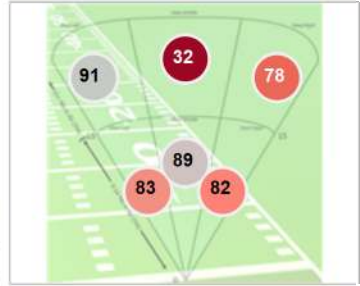
2016 Standard Passing Table

QB	Comp	Att	Comp %	Yds	YPA	TDs	INT	Sacks	Rating	Rk
Carson Wentz	379	608	62%	3,782	6.2	16	14	33	79.1	37
NFL Avg			63%		7.2				90.4	

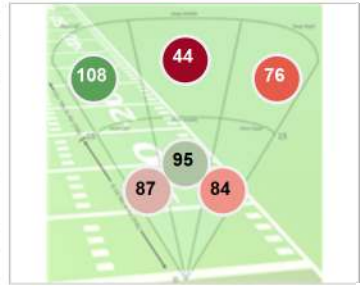
2016 Advanced Passing Table

QB	Success %	EDSR Passing Success %	20+ Yd Pass Gains	20+ Yd Pass %	30+ Yd Pass Gains	30+ Yd Pass %	Air Yds per Comp	YAC per Comp	20+ Air Yd Comp	20+ Air Yd %
Carson Wentz	44%	47%	39	6%	11	2%	5.1	4.8	20	3%
NFL Avg	44%	48%	27	8%	10	3%	6.4	4.8	12	4%

Carson Wentz Rating All Downs



Carson Wentz Rating Early Downs



Interception Rates by Down

Yards to Go	1	2	3	4	Total
1 & 2	0.0%	0.0%	0.0%	0.0%	0.0%
3, 4, 5	0.0%	3.1%	4.1%	12.5%	4.3%
6 - 9	0.0%	1.5%	3.8%	0.0%	2.4%
10 - 14	1.3%	3.8%	2.7%	0.0%	2.0%
15+	0.0%	0.0%	0.0%	0.0%	0.0%
Total	1.2%	2.5%	3.0%	5.3%	2.2%

3rd Down Passing - Short of Sticks Analysis

QB	Avg Yds to Go	Air Yds (of Comps)	Avg Yds Short	Short of Sticks Rate	Rk
Carson Wentz	7.4	5.1	-2.2	56%	38
NFL Avg	7.6	6.8	-0.8	57%	

Air Yds vs YAC

	Air Yds %	YAC %	Rk
Carson Wentz	46%	54%	41
NFL Avg	54%	46%	

2016 Receiving Recap & 2017 Outlook

Inserting Alshon Jeffery and Torrey Smith should have the intended impact of getting more explosiveness out of the passing offense. Of course, the line has to stay healthy to provide protection and Wentz has to be accurate to hit them. Apart from Jordan Matthews and Zach Ertz, the Eagles were completely ineffective on any pass thrown 15+ yards in the air, particularly those targets to Dorial Green-Beckham and Nelson Agholor. Last year the Eagles rarely threw the ball inside the 10, instead they ran much more and were extremely successful when running. The most successful plays on 1st & 10 and 2nd & medium or long were all passes to TEs.

Player *Min 50 Targets	Targets	Comp %	YPA	Rating	TOARS	Success %	Success Rk	Missed YPA Rk	YAS % Rk	TDs
Jordan Matthews	116	63%	6.9	92	4.9	49%	80	83	82	3
Zach Ertz	106	74%	7.7	92	4.8	58%	26	27	99	4
Dorial Green-Beckham	74	49%	5.3	62	3.8	45%	113	124	104	2
Darren Sproles	71	73%	6.0	98	4.2	45%	111	131	129	2
Nelson Agholor	69	52%	5.3	59	3.6	39%	136	120	113	2
Trey Burton	60	62%	5.5	75	3.6	43%	120	50	124	1

Directional Passer Rating Delivered

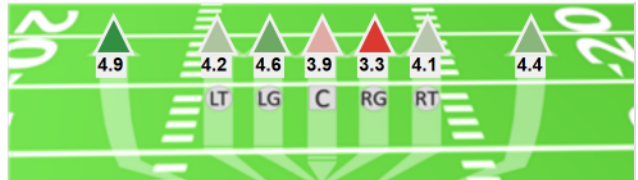
Receiver	Short Left	Short Middle	Short Right	Deep Left	Deep Middle	Deep Right	Player Total
Jordan Matthews	72	138	78	101	70	96	92
Zach Ertz	91	106	88	158	24	92	92
Dorial Green-Beckham	70	52	93	44	65	40	63
Darren Sproles	95	81	84			158	98
Nelson Agholor	91	74	37	122	42	49	59
Trey Burton	80	66	108	40	40	74	76
Josh Huff	93	40	119				103
Team Total	84	94	81	103	33	92	83

2016 Rushing Recap & 2017 Outlook

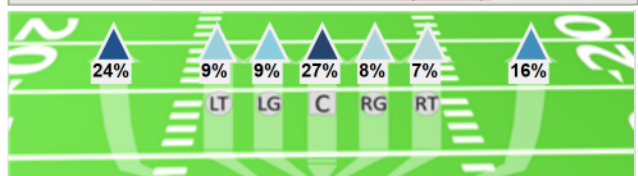
With LeGarrette Blount as the clear #1 back, the team may look to deal Ryan Mathews. But keep in mind the Eagles face the 3rd most difficult schedule of run defenses this year, up from 8th most difficult in 2016. Mathews was used in 16% of the Eagles overall plays, but the offense became extremely run-heavy when up by more than one-score, and Mathews was the prime benefactor. Which would inherently bode well for Blount. But the Eagles have to gain the lead to get there, and Wentz will need support on the ground when the game is within one-score. He had that support in 2016, as the Eagles ranked 8th in success rate on 1st down runs, including 5th when in opponent's territory, recording a 57% success rate.

Player *Min 50 Rushes	Rushes	YPA	Success %	Success Rk	Missed YPA Rk	YTS % Rk	YAS % Rk	Early Down Success %	Early Down Success Rk	TDs
Ryan Mathews	155	4.3	52%	12	20	19	25	52%	13	8
Darren Sproles	94	4.7	52%	15	60	30	33	56%	6	2
Wendell Smallwood	77	4.1	49%	25	30	7	45	49%	25	1

Yards per Carry by Direction



Directional Run Frequency



PHI-4

Despite the 10th best pass protection last year, Wentz led the Eagles to a 25th ranking in passing efficiency. After a week one battle in DC against the Redskins, the schedule immediately will challenge the young Wentz. From weeks 2 through 6, the Eagles will face the most difficult schedule of pass defenses in the NFL, by a long way.

And at the running back position, they added LeGarrette Blount, who was off of a down season in New England despite volume driven success. Blount's averages and efficiency metrics were poor, but thanks to the success of the Patriots offense, he received a ton of usage as well as opportunities in the red zone. If the Eagles release Ryan Mathews once he passes his physical, as is rumored, there is no doubt Blount should see a fair amount of usage. The Eagles most frequent play on first down and any distance as well as second and any distance less than 8 yards to go was a Ryan Mathews run. And inside the 5 yard line, Mathews dominated the offensive opportunities, racking up 17 carries while the rest of the team had fewer than 7 combined rushes and 7 combined passes. Blount should be successful there, but he will have to improve over 2016 because this offense is not the Patriots, and he won't have as many chances to rack up those numbers.

The Eagles play the 3rd most difficult schedule of run efficiency defense, 9th most difficult for explosive rushes and 3rd most difficult for RB-targets in the pass game. They faced a difficult schedule in

2016 as well, but this is actually slightly more difficult. And unlike the second half of the schedule for the passing offenses, it's a brutal close to the season for the Eagles run offense. They face five top-8 run defenses in the 7 weeks after their bye, and 4 of those 5 games come on the road. A struggling run game on the road means more reliance upon Wentz's arm. The 2017 season will prove whether the Eagles found their franchise QB or if they should have concerns about Wentz moving forward.

Defensively the Eagles faced a brutal schedule of opposing offenses last year – it was the toughest in the NFL. This year it gets much easier. It's the #2 easiest shift in pass offenses faced from 2016 to 2017, and the #1 easiest shift in rush offense "blend" from 2016 to 2017. That's what happens when you swap out the Steelers, Falcons, Packers and Lions and instead insert the Rams, 49ers, Chiefs and Panthers. It's not an easy schedule but it's much easier than the Eagles faced in 2016.

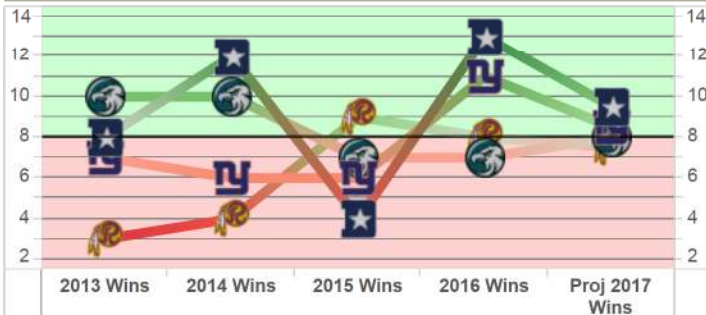
An improved defense and a stronger offensive line would allow Wentz to efficiently progress in his sophomore campaign. But Doug Pederson and Frank Reich must help Wentz as much as possible. Flashy new WRs to pair with Jordan Matthews may look great, but the efficiency that Wentz enjoyed when passing to his TEs last year cannot be forgotten. And there are a number of basic yet simple things the Eagles can do offensively to clean up some efficiency leaks to keep the Wentz Wagon moving in the right direction.

2016 Situational Usage by Player & Position

Usage Rate by Score

Player	Being Blown Out (14+)	Down Big (9-13)	One Score	Large Lead (9-13)	Blowout Lead (14+)	Grand Total
Ryan Mathews	1%	12%	18%	33%	15%	16%
Darren Sproles	9%	12%	8%	8%	20%	9%
Wendell Smallwood	7%	7%	7%	6%	28%	8%
Nelson Agholor	1%	1%	0%			1%
Kenjon Barner	1%	3%	2%	3%	11%	3%
Byron Marshall		2%	3%			2%
Josh Huff		1%	0%			0%
Bryce Treggs			0%			0%
Terrell Watson			1%			1%
Total	19%	37%	39%	50%	74%	39%
PASS						
Ryan Mathews	2%	2%	1%			1%
Darren Sproles	12%	4%	7%	8%	4%	7%
Jordan Matthews	7%	10%	13%	14%	6%	12%
Zach Ertz	19%	14%	10%	6%		11%
Wendell Smallwood	4%	5%	0%			1%
Dorial Green-Beckha...	11%	11%	7%			7%
Nelson Agholor	5%	5%	8%	3%	9%	7%
Trey Burton	9%	6%	6%	11%	2%	6%
Kenjon Barner	1%	2%	1%			1%
Byron Marshall		1%	1%			1%
Josh Huff		2%	2%	3%	4%	2%
Brent Celek			3%	3%	2%	2%
Bryce Treggs	1%	3%	1%	3%		1%
Paul Turner	8%		1%			1%
Terrell Watson			0%			0%
Total	81%	63%	61%	50%	26%	61%

Division History: Season Wins & 2017 Projection



Rank of 2017 Defensive Pass Efficiency Faced by Week



Rank of 2017 Defensive Rush Efficiency Faced by Week



Positional Target Distribution vs NFL Average

Depth	Position	NFL Wide				Team Only			
		Left	Middle	Right	Total	Left	Middle	Right	Total
Deep	WR	1,006	565	974	2,545	25	16	27	68
	TE	153	141	159	453	5	6	4	15
	RB	25	4	39	68			1	1
Short	All	1,184	710	1,172	3,066	30	22	32	84
	WR	2,992	1,715	3,077	7,784	101	56	109	266
	TE	806	844	1,121	2,771	30	31	30	91
Total	RB	983	614	1,083	2,680	32	8	30	70
	All	4,781	3,173	5,281	13,235	163	95	169	427
Total		5,965	3,883	6,453	16,301	193	117	201	511

Positional Success Rates vs NFL Average

Depth	Position	NFL Wide				Team Only			
		Left	Middle	Right	Total	Left	Middle	Right	Total
Deep	WR	37%	50%	38%	41%	28%	44%	33%	34%
	TE	44%	50%	43%	46%	60%	33%	50%	47%
	RB	32%	75%	23%	29%			100%	100%
Short	All	38%	51%	38%	41%	33%	41%	38%	37%
	WR	52%	57%	52%	53%	50%	57%	41%	48%
	TE	50%	61%	52%	54%	57%	77%	43%	59%
Total	RB	47%	49%	44%	46%	50%	50%	37%	44%
	All	51%	56%	50%	52%	51%	63%	41%	50%
Total		48%	55%	48%	50%	48%	59%	40%	48%